

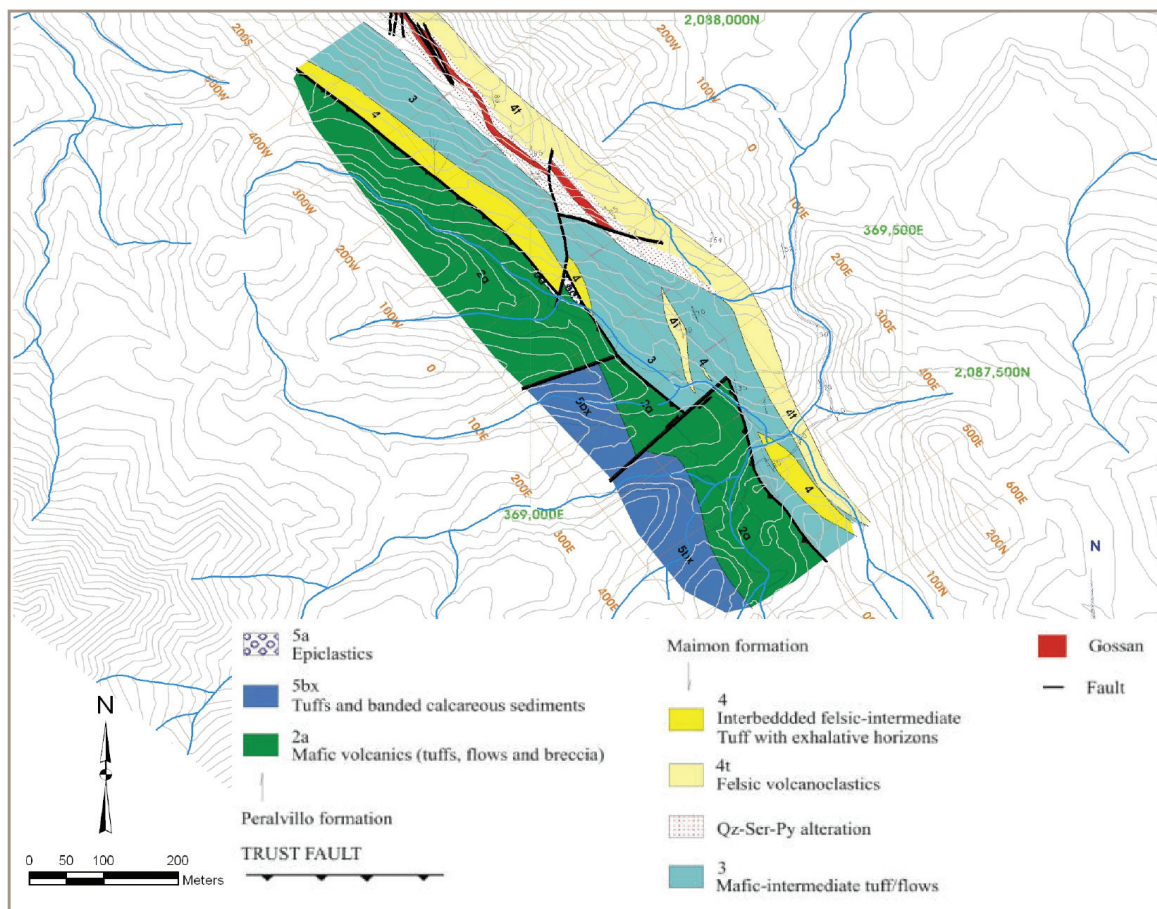


## CERRO DE MAIMON



Survey Area

Cerro De Maimon,  
Dominican Republic

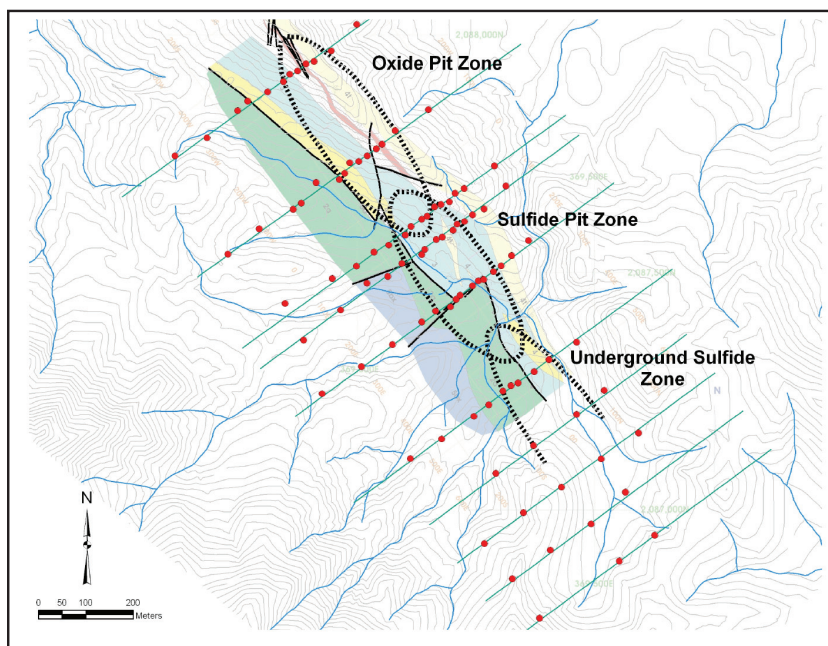


### Survey Design:

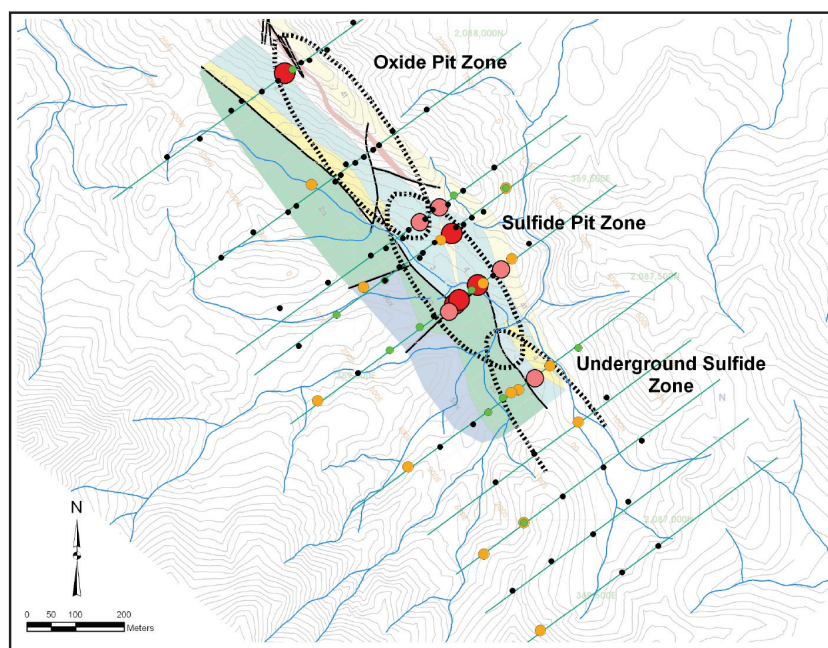
100 Sample Modules along six transects over known mineralization, and along four lines along the projection of the mineralization trend to the south.

### Geology:

- Volcanogenic massive sulfide deposit, trending northwest and dipping moderately to the southwest.
- Weathered to gossan in the surface and near surface environment.
- Deposit rakes at a low angle to the southeast.



- VMS in tropical environment
- Six transects over known mineralization; additional transects in southeast
- Sample spacing at 40 meters over known mineralization, 100 meters if distal to known mineralization
- Modules exposed for 60 days



- Anomalous geochemical signature over sulfide pit zone and underground sulfide zone
- Sampling at 60 meters spacing crossing favorable stratigraphy would lead to follow-up exploration over mineralization



**AMPLIFIED  
GEOCHEMICAL  
IMAGING, LLC**

**AMPLIFIED GEOCHEMICAL IMAGING LLC**

210 Executive Drive Suite 1, Newark, DE 19702  
Phone: +1.302.266.2428 Fax: +1.302.266.2429

Email: [info@agisurveys.net](mailto:info@agisurveys.net)

[www.agisurveys.net](http://www.agisurveys.net)